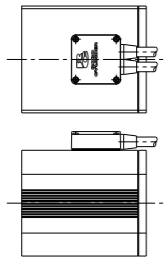


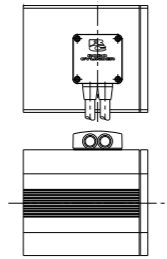
Options (Free of Charge)

Cable Outlet Direction

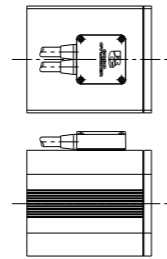
Motor Direction (Standard)
(Code: Left blank)



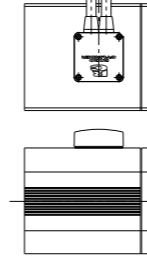
Left
(Code: A1)



Rod Direction
(Code: A2)

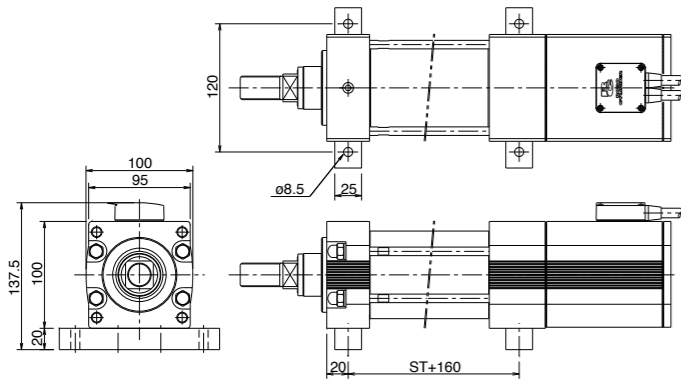


Right
(Code: A3)

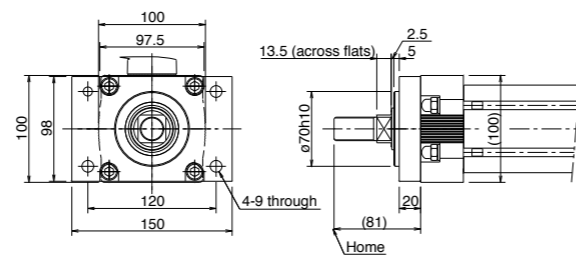


Options (Additional Charge)

Foot Bracket (Code: FT)



Mounting Flange (Code: FL)



RCP2-RFA/RFW

ROBO Cylinder High Thrust Type

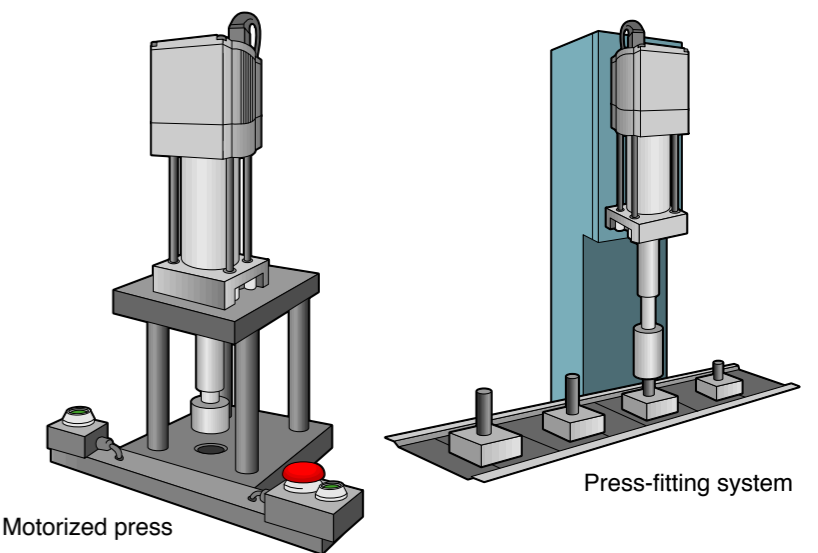
- Maximum push force of 6000N (612 kgf)
- High thrust type also suitable for use in a motorized press



Features

- The RCP2-RFA achieves a maximum push force of 6000 N, more than seven times the maximum push force available on a conventional model (800 N).
- Its high-performance closed-loop stepper function provides a maximum of 64 positions; high positioning repeatability of ± 0.02 mm; and speed setting capability.
- Choose a desired stroke from six levels of 50 to 300 mm, and maximum push force from three levels of 1500, 3000 and 6000 N.
- Maximum vertical load capacity of 150 kg (in the case of 2.5 lead)
- The dust/splash proof model RCP2-RFW is rated IP 54

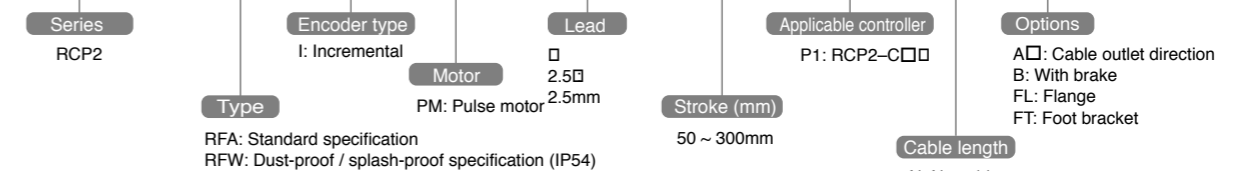
Examples of Use



Models

Actuator model

RCP2 — RFA — I — PM — 2.5 — 300 — P1 — S — B



Controller model

RCP2 — CF — RFA — I — PM — 0 — P

