

Electro-mechanical Assembly Press UFM 50/250/240

Article No.: 378055

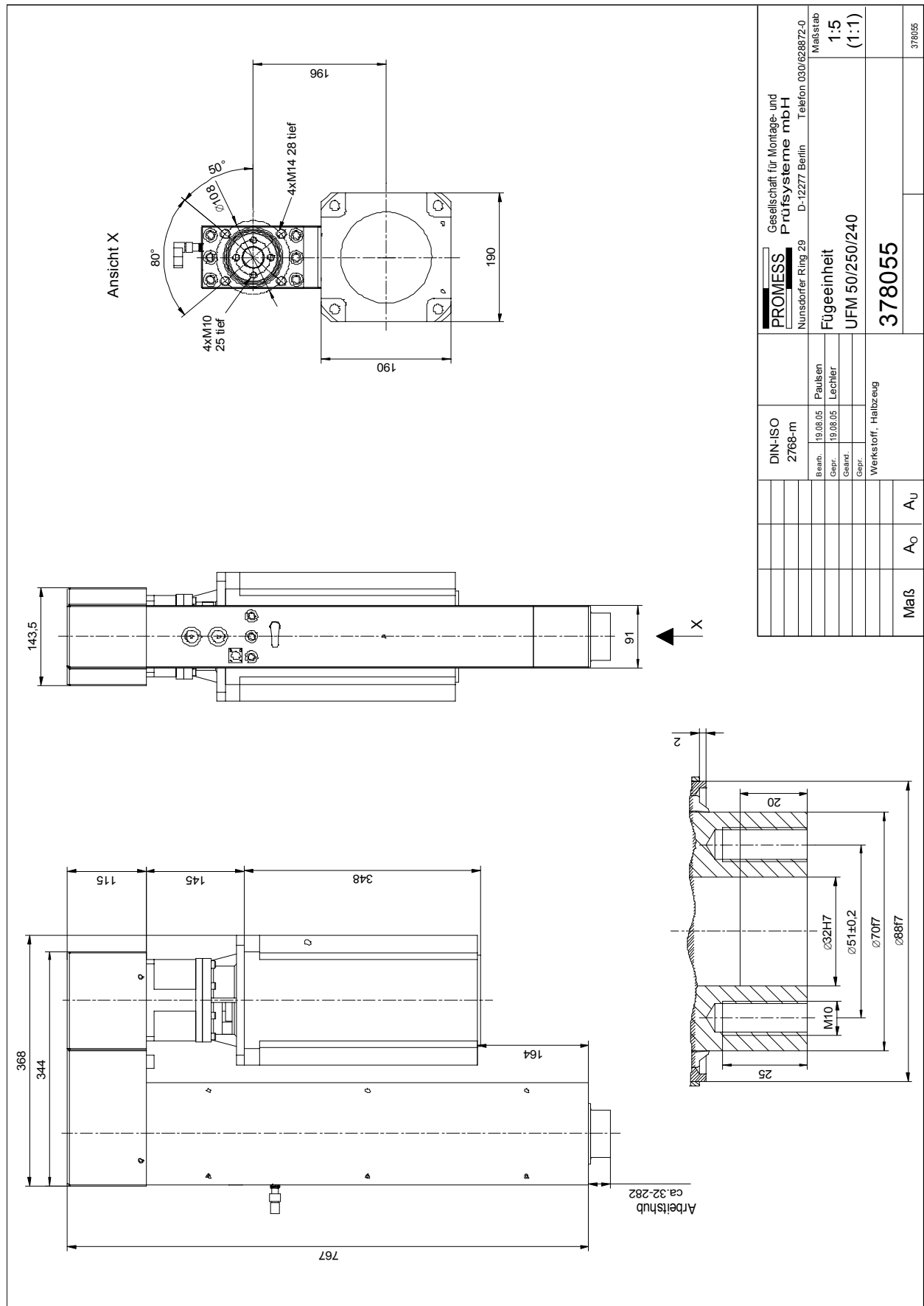


The electro-mechanical assembly presses are designed for heavy duty applications in automatic assembly lines or manual loaded stations. Following components are part of the unit: robust mechanic with AC-servomotor, ballscrew or threaded spindle for transfer the rotation into a linear movement, integrated force transducer measuring force directly and control unit.

Main functions	Nominal load	+/- 50kN
	Stroke	250 mm
	Nominal speed	240 mm/s
	Dwell time of nominal load	min. 10 s
	Weight	110 kg
	Max. tool weight	50 Kg
Force measuring	Integrated strain gauge	
	Characteristic value	0,5 mV / V
	Transducer accuracy (dismantled)	0,2%
	System accuracy	< 1%
	Resolution	12 Bit
	Smallest measuring step	13,43 N
	Measuring frequency	1 kHz
	Amplifier / W*H*D	Al-diecast housing / 150*64*36 mm
	Output signal	+/- 10 VDC
	Protection class	IP 54
Distance measuring	Resolver	
	Resolution	16384 I/U, ≈ 0,1 µm
	Measuring frequency	1 kHz
	Repeatability of positioning	< 0,01 mm
Drive	All-digital pulse-inverter with steady intermediate voltage	
	Type / W*H*D	SP2403
	Nominal unit capacity	15 kW
	Mains voltage	3 AC 380 V - 480 V, +/-10 %, 48-65 Hz
	Cable cross sectional – area Input / Output	6 / 6 mm ²
	Protection class	IP 20
	Weight	7 kG
	Recommended protection	IEC gG / 32 A
	Temperature range	- 10 ... + 50 °C
	Thermal power loss	320 W
Additional Inputs	1x Analog / 1x Incremental	11 Bit / Encoder (max. 410 kHz)
Interface PC	Standard / Optional	RS 485 / Ethernet
PLC Interface (24 VDC)	Standard (Optional Link module)	3 I / 4 O (12 I / 12 O)
PLC fieldbus interface	Optional	Profibus, CANOpen, Interbus, DeviceNet

Electro-mechanical Assembly Press UFM 50/250/240

Article No.: 378055



Angaben sind aktuelle Werte zum Druckdatum. Bevor Sie aufgeführte Informationen zur Grundlage eigener Berechnungen und / oder Verwendung machen, informieren Sie sich bitte, ob Sie den aktuellen Stand der Informationen besitzen. Eine Haftung für die Richtigkeit der Informationen wird nicht übernommen. Mz-06

PROMESS Gesellschaft für Montage- und Prüfsysteme mbH

Nunsdorfer Ring 29
12277 Berlin
Tel.: +49/30/62 88 72 0

Fax: +49/30/62 88 72 59
e-mail: promess@promessmontage.de
web: www.promessmontage.de