

# Electro-mechanical Assembly Press UFM 20/180/150

Article No.: 374125



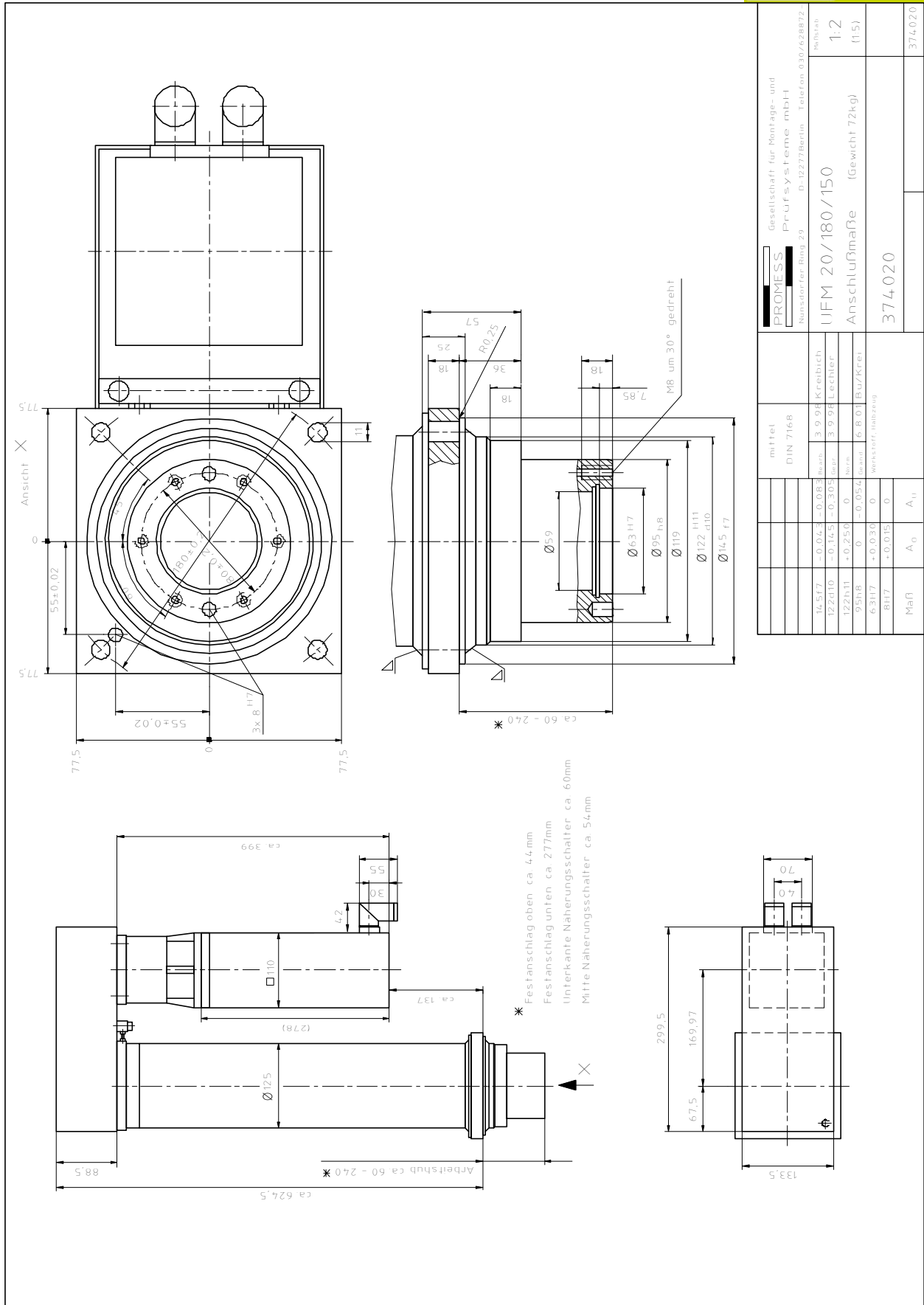
The electro-mechanical assembly presses are designed for heavy duty applications in automatic assembly lines or manual loaded stations. Following components are part of the unit: robust mechanic with AC-servomotor, ball screw or threaded spindle for transfer the rotation into a linear movement, integrated force transducer measuring force directly and control unit.

|                               |   |  |
|-------------------------------|---|--|
| <b>Main functions</b>         | Nominal load  | +/- 20 kN                              |
|                               | Stroke  | 180 mm                                 |
|                               | Nominal speed   | 150 mm/s                               |
|                               | Dwell time of nominal load                                  | min. 4 s                               |
|                               | Weight  | 72 kg                                  |
|                               | Max. tool weight  | 20 Kg                                  |
| <b>Force measuring</b>        | Integrated strain gauge                                     |  |
|                               | Characteristic value  | 1 mV / V                               |
|                               | Transducer accuracy (dismantled)                            | 0,5%                                   |
|                               | System accuracy   | < 1,5%                                 |
|                               | Resolution  | 12 Bit                                 |
|                               | Smallest measuring step                                     | 5,37 N                                 |
|                               | Amplifier / W*H*D   | Al-diecast housing / 150*64*36 mm      |
|                               | Output signal   | +/- 10 VDC                             |
|                               | Protection class  | IP 54                                  |
| <b>Distance measuring</b>     | Resolver  |  |
|                               | Resolution  | 0,3 µm                                 |
|                               | Repeatability of positioning                                | < 0,01 mm                              |
| <b>Drive</b>                  | All-digital pulse-inverter with steady intermediate voltage |  |
|                               | Type / W*H*D  | SP1405 / (100*386*219 mm)              |
|                               | Nominal unit capacity                                       | 3,0 kW                                 |
|                               | Mains voltage   | 3 AC 380 V - 480 V, +/-10 %, 48-65 Hz  |
|                               | Cable cross sectional – area Input / Output                 | 1,5 / 1 mm <sup>2</sup>                |
|                               | Protection class  | IP 20                                  |
|                               | Weight  | 5,8 kG                                 |
|                               | Recommended protection                                      | IEC gG / 12 A                          |
|                               | Temperature range   | - 10 ... + 50 °C                       |
|                               | Thermal power loss  | 139 W                                  |
| <b>Additional Inputs</b>      | 1x Analog / 1x Incremental                                  | 11 Bit / Encoder (max. 410 kHz)        |
| <b>Interface PC</b>           |   | Ethernet / RS 485                      |
| <b>PLC Interface (24 VDC)</b> | Standard (Optional Link module)                             | 3 I / 4 O (12 I / 12 O)                |
| <b>PLC fieldbus interface</b> | Optional  | Profibus, CANOpen, Interbus, DeviceNet |

# Electro-mechanical Assembly Press UFM 20/180/150

Article No.: 374125

# PROMESS



Angaben sind aktuelle Werte zum Druckdatum. Bevor Sie aufgeführte Informationen zur Grundlage eigener Berechnungen und / oder Verwendung machen, informieren Sie sich bitte, ob Sie den aktuellen Stand der Informationen besitzen. Eine Haftung für die Richtigkeit der Informationen wird nicht übernommen. Nov-07

## PROMESS Gesellschaft für Montage- und Prüf-systeme mbH

Nunsdorfer Ring 29  
 12277 Berlin  
 Tel.: +49/30/62 88 72 0

Fax: +49/30/62 88 72 59  
 e-mail: promess@promessmontage.de  
 web: www.promessmontage.de